

Gefen

HDMI Super Booster Plus USER MANUAL



www.gefen.com

ASKING FOR ASSISTANCE

Technical Support:

Telephone (818) 772-9100
(800) 545-6900

Fax (818) 772-9120

Technical Support Hours:

8:00 AM to 5:00 PM Monday thru Friday.

Write To:

Gefen Inc.
C/O Customer Service
20600 Nordhoff St.
Chatsworth, CA 91311

support@gefen.com
www.gefen.com

Notice

Gefen Inc. reserves the right to make changes in the hardware, packaging and any accompanying documentation without prior written notice.

The HDMI Super Booster Plus is a trademark of Gefen Inc.

© 2008 Gefen Inc., All Rights Reserved

TABLE OF CONTENTS

- 1 Introduction
- 2 Features
- 3 Panel Descriptions
- 4 Connecting and Operating the HDMI Super Booster Plus
- 5 Auto Equalization
- 6 Specifications
- 7 Warranty

INTRODUCTION

The Gefen HDMI Super Booster Plus is an attractive alternative to the traditional sender/receiver solutions for HD extension. The HDMI Super Booster Plus enables your standard “off the shelf” HDMI cable to transmit HDTV video plus multichannel digital audio in a single cable way beyond the limited HDMI specification of 15-feet.

Up to 200 feet can be easily traversed using your HDMI cable plus a HDMI Super Booster Plus. The HDMI Super Booster Plus corrects any digital degradation that occurs when HDMI is used to send digital audio/video signals beyond the HDMI specification of 15 feet.

How It Works

This plug and play installation takes mere seconds. You simply connect the HDMI cable on one side of the HDMI Super Booster Plus and the display’s cable on the other side. The HDMI Super Booster Plus sits between the end of your HDMI cable and your display. You also have the option of connecting another HDMI cable to the Booster, daisy chaining Boosters and cables for greater distances.

FEATURES

Features

- Perfect digital high definition video sent over long stretches of HDMI cables
- Locate an HDMI display up to 200 feet away from any HDTV source
- Supports resolutions up to 1080p, 2K, and 1920 x 1200
- HDMI/HDCP compliant

Includes:

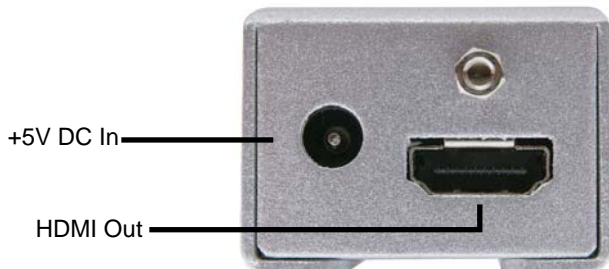
- (1) HDMI Super Booster Plus
- (1) 5V DC Power Supply
- (1) User's Manual

PANEL LAYOUT

Front Panel



Back Panel



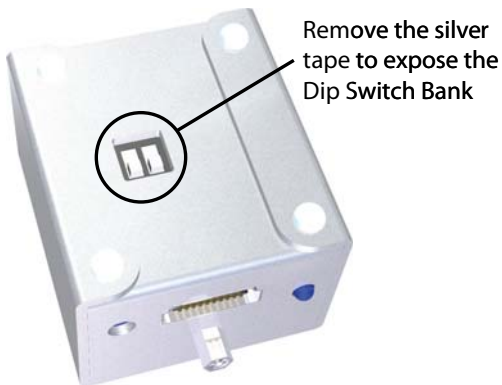
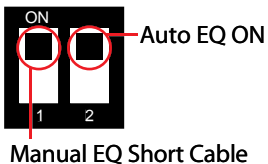
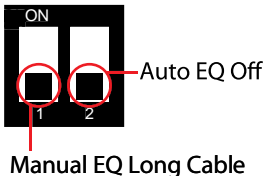
CONNECTING AND OPERATING THE HDMI SUPER BOOSTER PLUS

1. Connect the long HDMI cable from the source into the “HDMI In” on the front of the HDMI Super Booster Plus. The HDMI Super Booster Plus is placed next to your display to regenerate the HDMI signal.
2. Connect a short HDMI cable from the “HDMI Out” connection in the back of the HDMI Super Booster Plus to your display or projector
3. Plug the 5V DC power supply into the HDMI Super Booster Plus.
4. Plug the 5VDC wall mount power supply into the wall outlet.

Manual Equalization

By default, the HDMI Super Booster Plus is set to manual equalization. The service Dip Switch 2, located on the underside of the unit behind a silver colored metallic sticker, must be in the OFF position for manual EQ to be enabled. Dip Switch 1 relates to manual EQ short and long cable settings. By default, Dip Switch 1 is in the long cable mode (OFF). Adjust the EQ Trim Pot on the front of the unit to eliminate video noise by inserting a small flat-head tool into the Trim Pot port. Turn the Trim Pot in very small increments to EQ the video signal until all video noise is eliminated. If a short cable is being used and there is either video noise that cannot be tuned out or no image at all in the long cable mode, change the manual EQ setting to short cable mode by turning Dip Switch 1 to the ON position. Re-insert the adjustment tool and EQ the video signal. Use the diagram on the next page to locate and view the location and settings of the Dip Switches.

AUTO EQUALIZATION



Dip Switch 2 can be used to turn on the automatic equalization function. Use this setting for ease of setup as this mode will automatically tune out unwanted video noise. To do this, turn Dip Switch 2 to the ON position. No manual adjustments to the EQ can be made in this mode using the EQ Trim Pot on the front of the unit. Dip Switch 1 will not have any effect in this mode. If video noise is still present in automatic EQ mode, return to manual EQ mode by turning Dip Switch 2 to the OFF position and manually tune the signal using the instructions on the previous page.

SPECIFICATIONS

Video Amplifier Bandwidth	165 MHz
Input Video Signal	1.2 Volts p-p
Input DDC Signal	5 Volts p-p (TTL)
Maximum Single Link Range	1920 x 1200 x 60hz
HDMI Input/Output Connector Type	HDMI Type A
Power Consumption	5 Watts (max)
Power Supply.....	5V DC
Dimensions	1.75"W x 1"H x 2.25"D
Shipping Weight	2 Lbs