



**2x1 DVI DL**  
**Switcher**  
USER MANUAL

## ASKING FOR ASSISTANCE

---

### Technical Support:

Telephone (818) 772-9100  
(800) 545-6900

Fax (818) 772-9120

### Technical Support Hours:

8:00 AM to 5:00 PM Monday thru Friday.

### Write To:

Gefen Inc.  
c/o Customer Service  
20600 Nordhoff Street  
Chatsworth, CA 91311

[www.gefen.com](http://www.gefen.com)  
[support@gefen.com](mailto:support@gefen.com)

### Notice

Gefen Inc. reserves the right to make changes in the hardware, packaging and any accompanying documentation without prior written notice.

**2x1 DVI DL Switcher** is a trademark of Gefen Inc.

# TABLE OF CONTENTS

---

- 1** Introduction
- 2** Features
- 3** Panel Descriptions
- 4** Connecting and Operating the DL Switcher
- 5** Operation Notes
- 6** RMT2-IR Installation
- 7** IR Code Conflicts
- 8** IR Extender Installation
- 9** Specifications
- 10** Warranty

# INTRODUCTION

---

Congratulations on your purchase of the Gefen 2x1 DVI DL Switcher. Your complete satisfaction is very important to us.

Gefen's line of KVM (Keyboard Video & Mouse), DVI, ADC, USB, switches, extenders, converters and hubs is designed to make computer use more comfortable, more productive and less expensive. KVM switches allow access to multiple computers from a single keyboard, while the extenders give the user control over a computer up to 330 feet away from the work area.

Gefen products offer solutions for noise, space and security concerns, data center control, information distribution, conference room presentation, and school and corporate training environments.

## Our Commitment

Gefen will always offer the finest quality product at the best possible price. Included in that price is a lifetime of free support from a team of outstanding engineers.

Now you can switch easily and reliably between any combination of two dual link DVI & USB 2.0 equipped computers (PC or Mac) - using only one keyboard, display and mouse. The DL cross platform switcher saves space - there's no need to work on a desk crowded with double displays, keyboards and mouse devices. It saves time - there's no need to move from one monitor to another to access different computers. And, it saves money - there's no need to purchase additional displays, mouse devices, keyboards etc.

# FEATURES

---

## Features

- Saves money on hardware costs
- Saves space on your desktop
- Save time and increase your productivity
- Maintains highest 3840 x 2400 x 60Hz resolution video
- No loss of quality
- Use either PC or Mac with USB keyboard/mouse
- Switches easily between any two dual link DVI computers
- Switch between two dual link DVI, USB 2.0 and Audio Sources
- IR Remote control
- Rackmountable

## Includes:

- (1) 2x1 DVI DL Switcher
- (1) 5v Power Supply
- (1) RMT2-IR Remote Control
- (2) 6ft Dual Link DVI cables
- (2) 6ft USB cables
- (2) Audio cables

# PANEL DESCRIPTIONS



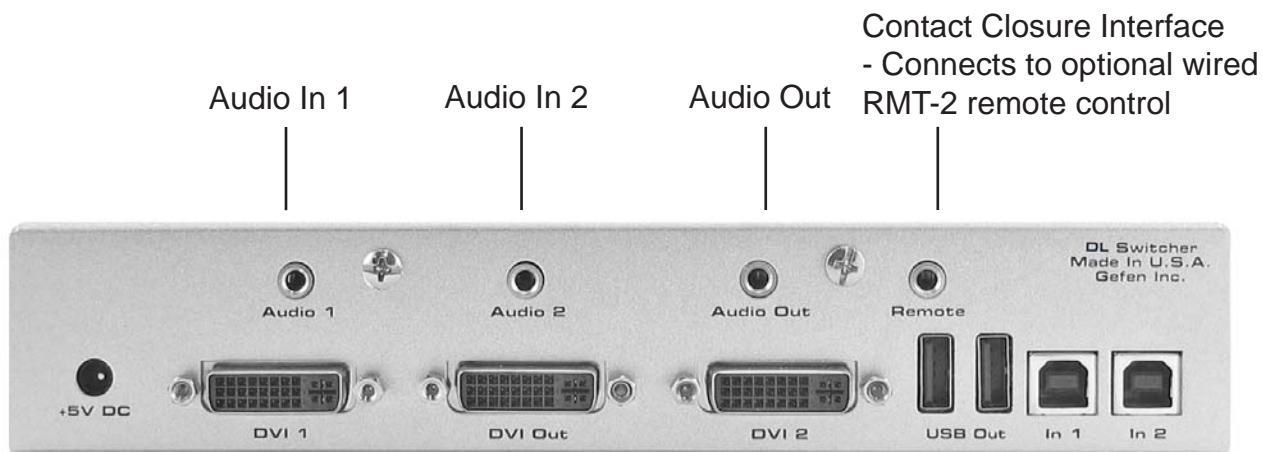
Power Indicator

Infrared Eye

Indicates which input is selected

Input Selector

Equalization Knobs



5VDC Input

DVI In 1

DVI Out

DVI In 2

USB Output

USB In 1

USB In 2

# CONNECTING AND OPERATING THE 2x1 DVI DL SWITCHER

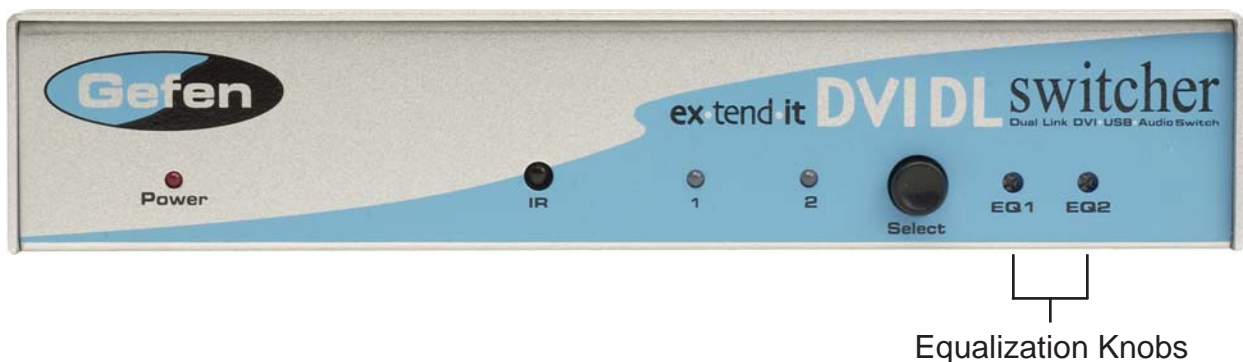
## How to Connect the DL Switcher to your devices

- 1- Connect the supplied cables from your first computer into the DVI In 1, USB In 1, and Audio In 1 connection in the back of the DVI Switcher.
- 2- Connect the supplied cables from your second computer into the DVI In 2, USB In 2, and Audio In 2 connection in the back of the DVI Switcher.
- 3- Connect the monitor to the DVI Out connection.
- 4- Connect your USB devices (e.g. keyboard, mouse) into the USB Out.
- 5- Connect your speakers to the Audio Out.
- 6- Plug the 5VDC power supply into the DL Switcher.

## How to Operate the DL Switcher

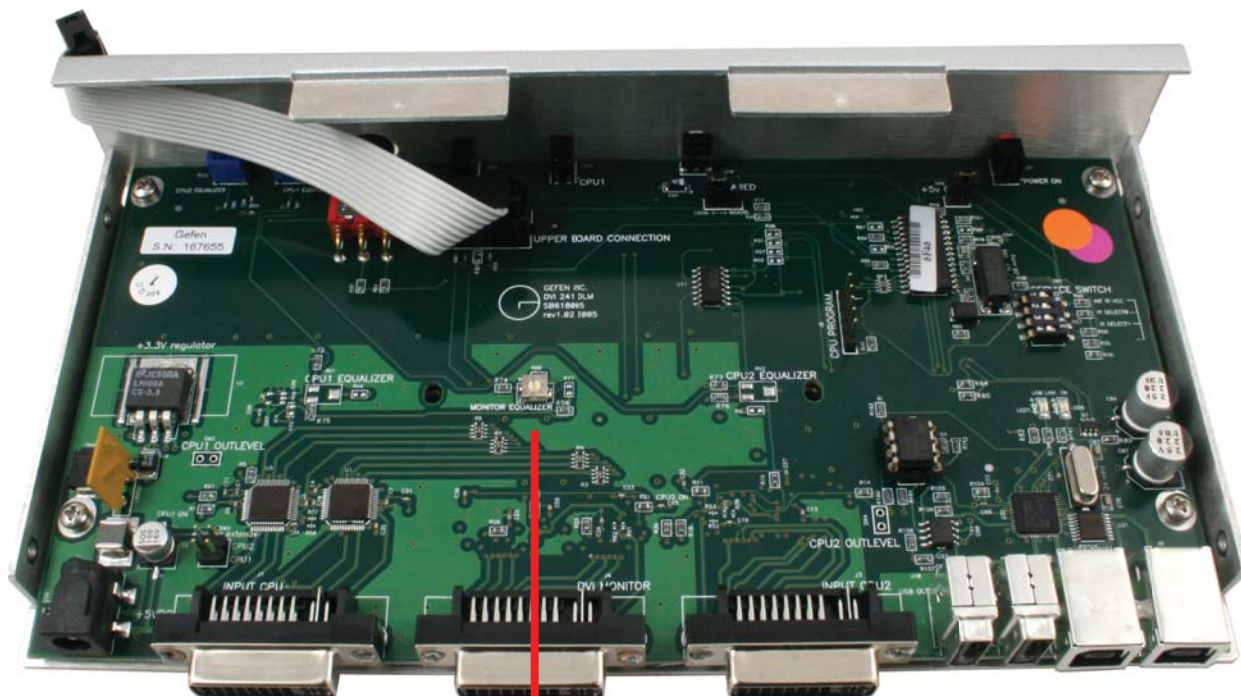
- 1- Use the front panel push button to switch between sources.
- 2- Use the RMT2-IR remote control port to remotely toggle between sources.
- 3- Use the optional RMT-2 wired remote control to remotely toggle between sources.

## Equalization control for the DVI DL Switcher



The external equalization knobs can be used to balance out signal noise resulting from long cables for better picture quality. By turning the equalization knobs counter-clockwise you will eliminate any noise and/or degradation in the signal. You should be able to find a "sweet spot" somewhere in the middle.

## 2x1 DVI DL OPERATION NOTES



Internal  
Equalization  
Knob

### Operation Notes

When turning on or rebooting your computers, the DVI DL Switcher must be selected to the computer that is booting until the computer completes the boot cycle. This step can be eliminated using the Gefen DVI Detective, which stores the displays EDID.

If you loose your picture when switch from source 1 to source 2 or vice-versa you will need a DVI Detective.

\*For the Dell 30" Display the internal and external equalization knobs will both need to be adjusted to get a clean video signal. The internal EQ can be reached by removing 9 screws situated on the sides of the casing and the 6 hex nuts on the DVI connectors.

If you are experiencing USB dropouts try using the switcher just as a USB hub by only connecting the USB cables from your computers to the switcher. Connect your devices to the USB out portion of the switcher and connect your display to your computer directly. Start your computer up and try switching. If your USB devices do come up normally then you will need a DVI Detective to negotiate the video/USB signals for faster switching. If they do not come up normally, then you will need to call tech support.

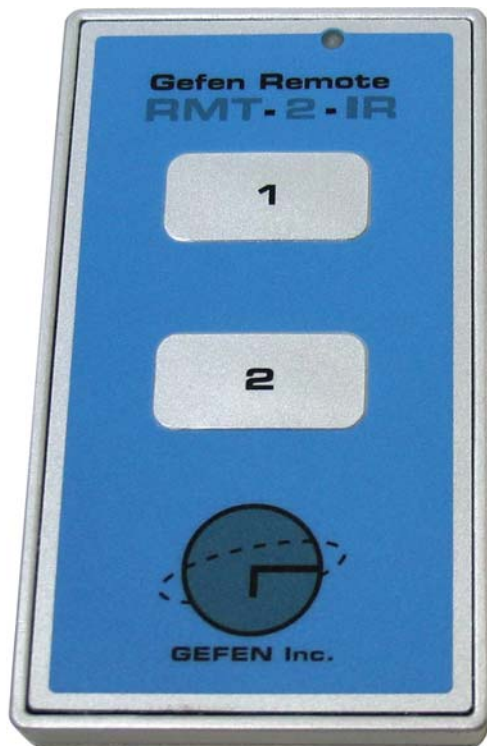


## RMT2-IR INSTALLATION

---

1. Remove battery cover from the back of the RMT2-IR remote.
2. Verify that dip switches 1 & 2 are in the down (OFF) position.
3. Insert the battery, hold the battery so that you can see the positive side facing up. The side that is not marked must be facing down.
4. Test the RMT2-IR remote by pressing ONLY one button at a time. The indicator light on the remote will flash once each time you press a button. **WARNING:** Do not press multiple buttons simultaneously and do NOT press buttons rapidly. These actions will cause the remote to reset and steps 1-4 will have to be repeated.

Note: The RMT2-IR ships with two batteries. One battery is required for operation, the second battery is complimentary.



Optional RMT-2 wired remote control

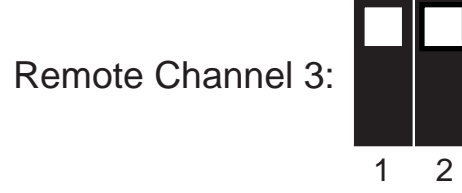
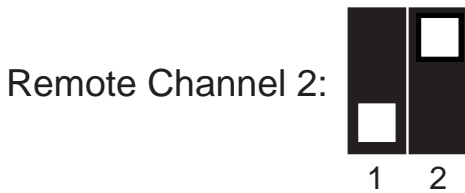
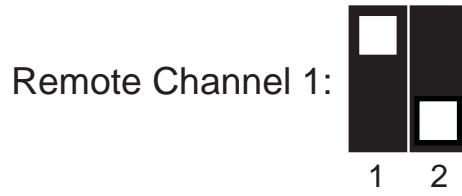
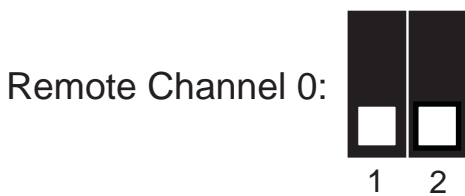


## IR CODE CONFLICTS

---

In the event of IR conflicts, please do the following:

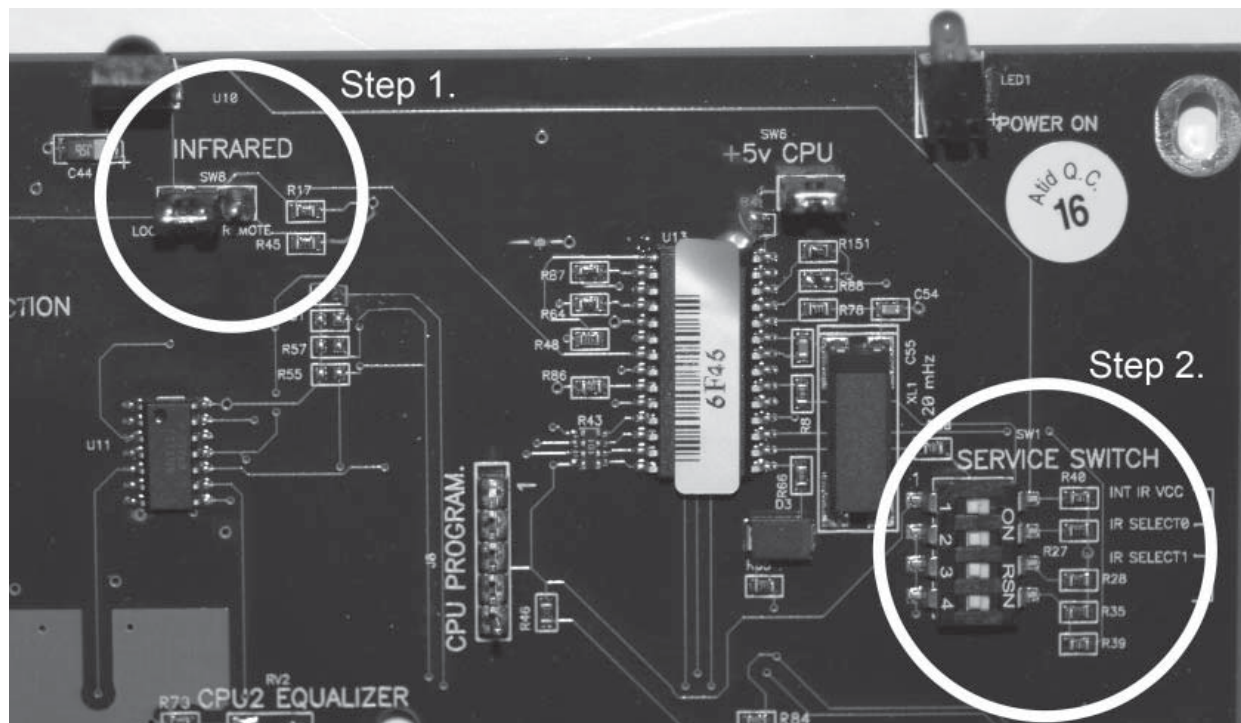
1. Remove the battery cover from the back of the RMT 2-IR remote.
2. Locate the Dip Switches above the batteries
3. Switch the Dip Switches on the RMT 2-IR to any of the combinations pictured below.
4. Dip Switches 1 and 2 in the RMT 2-IR correspond with Dip Switches 2 and 3 inside the 2X1 DVI DL Switcher respectively. Switch the switches inside the 2x1 DVI DL Switcher to match the same Remote Channel as the RMT 2-IR. The 2x1 DVI DL Switcher is now set to a new IR Code.



# IR EXTENDER INSTALLATION

## How to Connect the IR Extender

- 1 Open the unit and move the jumper labeled INFRARED (pictured\* as "Step 1" below) from Local to Remote
- 2 In the bank of switches labeled SERVICE SWITCH (pictured\* as "Step 2" below), flip Service Switch #1 (top most switch) to the ON position
- 3 Reassemble the unit.
- 4 Plug the IR extender into the Remote port on the front of the Switcher Unit



\*Note: Picture depicts upper right corner of the unit with the power light facing up.

## SPECIFICATIONS

---

Video Amplifier Bandwidth .....	2x 1.65 Gbps
Input Video Signal .....	1.2 volts p-p
Input DDC Signal .....	5 volts p-p (TTL)
Single Link Range .....	3840 x 2400
DVI Input/Output Connector Type .....	DVI-I 29 pin female (digital only)
USB 2.0 Input Connection .....	Type "B"
USB 2.0 Output Connection .....	Type "A"
Power Consumption .....	15 Watts (max.)
Power Supply .....	5VDC
Dimensions .....	4.625"D x 8.5"W x 1.75"H
Rackmountable .....	1 Rack Space
Shipping Weight .....	5 Lbs

## WARRANTY

---

Gefen Inc. warrants the equipment it manufactures to be free from defects in material and workmanship.

If equipment fails because of such defects and Gefen Inc. is notified within two (2) years from the date of shipment, Gefen Inc. will, at its option, repair or replace the equipment, provided that the equipment has not been subjected to mechanical, electrical, or other abuse or modifications.

Equipment that fails under conditions other than those covered will be repaired at the current price of parts and labor in effect at the time of repair. Such repairs are warranted for ninety (90) days from the day of reshipment to the Buyer.

This warranty is in lieu of all other warranties expressed or implied, including without limitation, any implied warranty or merchantability or fitness for any particular purpose, all of which are expressly disclaimed.

1. Proof of sale may be required in order to claim warranty.
2. Customers outside the US are responsible for shipping charges to and from Gefen.
3. Copper cables are limited to a 30 day warranty and cable must be free from any scratches, markings, and neatly coiled.

The information in this manual has been carefully checked and is believed to be accurate. However, Gefen Inc. assumes no responsibility for any inaccuracies that may be contained in this manual. In no event will Gefen Inc., be liable for direct, indirect, special, incidental, or consequential damages resulting from any defect or omission in this manual, even if advised of the possibility of such damages. The technical information contained herein regarding DL Switcher features and specifications is subject to change without notice.