



**2x1 Digital Audio
Switcher**
USER MANUAL

ASKING FOR ASSISTANCE

Technical Support:

Telephone (818) 772-9100
(800) 545-6900

Fax (818) 772-9120

Technical Support Hours:

8:00 AM to 5:00 PM Monday through Friday.

Write To:

Gefen Inc.
c/o Customer Service
20600 Nordhoff St.
Chatsworth, CA 91311

www.gefen.com
support@gefen.com

Notice

Gefen Inc. reserves the right to make changes in the hardware, packaging and any accompanying documentation without prior written notice.

2x1 Digital Audio Switcher is a trademark of Gefen Inc.

TABLE OF CONTENTS

- 1** Introduction
- 2** Features
- 3** Panel Descriptions
- 4** Connecting and Operating the 2x1 Digital Audio Switcher
- 5** RMT2-IR Installation
- 6** IR Extender Installation
- 7** Specifications
- 8** Warranty

INTRODUCTION

Congratulations on your purchase of the ex•tend•it 2x1 Digital Audio Switcher. Your complete satisfaction is very important to us.

Gefen's line of HDTV switches, extenders, and splitters are designed to make your A/V equipment use more comfortable, more productive and less expensive.

The 2x1 Digital Audio Switcher allows access to multiple Digital Audio devices, using a single Digital Audio receiver.

The ex•tend•it line offers solutions for noise, space and security concerns, data center control, information distribution, conference room presentation, school and corporate training environments.

Our Commitment

Gefen will always offer the finest quality product at the best possible price. Included in that price is a lifetime of support from a team of outstanding engineers.

The ex•tend•it 2x1 Digital Audio Switcher allows two SPDIF or OPTICAL devices to be switched easily in to one Digital Audio receiver. Simply connect your digital audio to the digital out.

FEATURES

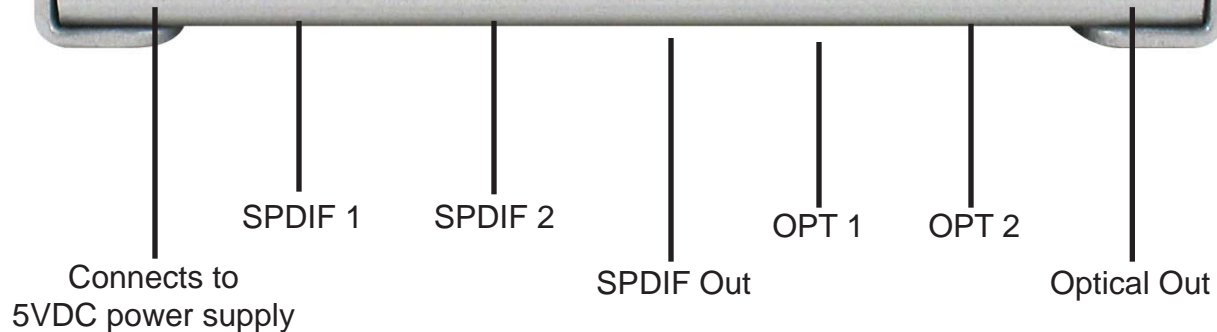
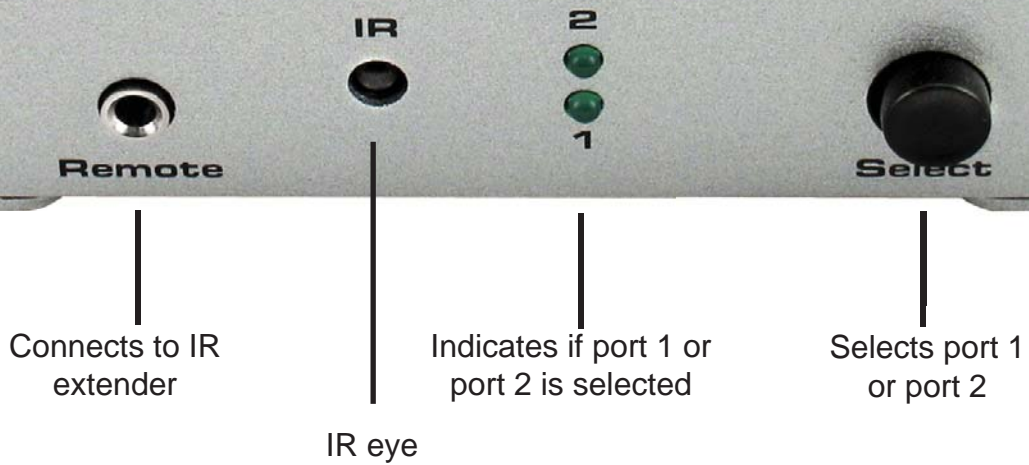
Features

- Switches easily between any two Digital Audio sources
- Optional RMT-2 remote control
- TOSLINK cables are used to connect the TOSLINK inputs and 2x1 TOSLINK Digital Audio Switcher output
- SPDIF cables are used to connect the SPDIF inputs and 2x1 SPDIF Digital Audio Switcher output
- Installs in seconds

Includes:

- (1) Digital Audio Switcher
- (2) 6' TOSlink cables
- (1) 5VDC Power Supply
- (1) RMT2-IR

PANEL DESCRIPTIONS



Connecting and Operating the 2x1 Digital Audio Switcher

How to Connect the 2x1 Digital Audio Switcher to your devices

- 1** Connect the digital audio cables from your devices into the 2x1 Digital Audio Switcher inputs.
- 2** Connect your digital audio receiver to the 2x1 Digital Audio Switcher output.
- 3** Input 1 and 2 can either be S/PDIF or TOSlink, not both.
- 4** Regardless of the input type the output can be both S/PDIF and TOSlink.
- 5** Plug the 5VDC power supply into the 2x1 Digital Audio Switcher.

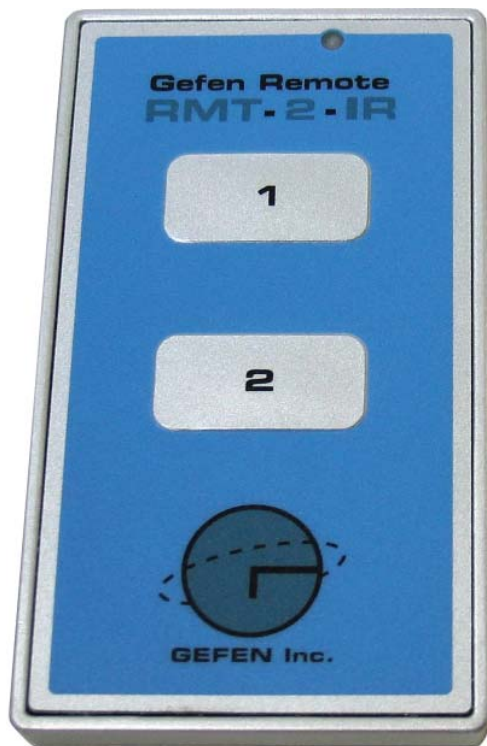
How to Operate the 2x1 Digital Audio Switcher

- 1** Use the front panel push button to switch between sources.
- 2** Alternatively, use the RMT2-IR remote control port to remotely toggle between sources.

RMT2-IR Installation

1. Remove battery cover from the back of the RMT2-IR remote.
2. Verify that dip switches 1 & 2 are in the down (OFF) position.
3. Insert the battery, hold the battery so that you can see the positive side facing up. The side that is not marked must be facing down.
4. Test the RMT2-IR remote by pressing ONLY one button at a time. The indicator light on the remote will flash once each time you press a button. **WARNING:** Do not press multiple buttons simultaneously and do NOT press buttons rapidly. These actions will cause the remote to reset and steps 1-4 will have to be repeated.

Note: The RMT2-IR ships with two batteries. One battery is required for operation, the second battery is complimentary.

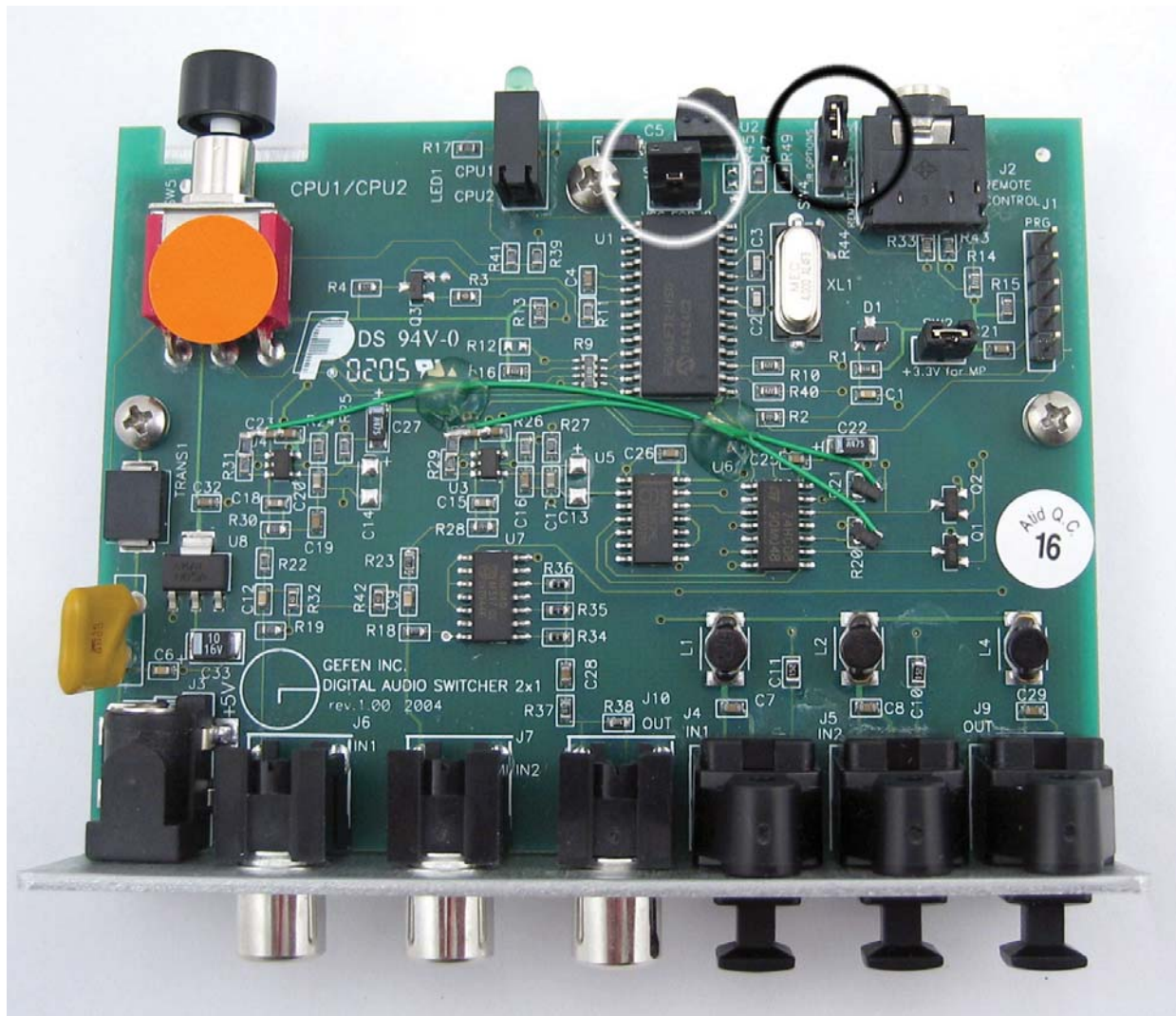


The optional IR extender allows you to relocate your 2x1 HDMI Digital Audio Switcher and still have IR control of the 2x1 HDMI Digital Audio Switcher

IR Extender Instructions

How to Connect the IR Extender to the 2x1 Digital Audio Switcher

- 1 Open the unit so the circuit board below is accessible.
- 2 Add a jumper to close the contact between the pins in the white circle
- 3 Move the jumper in the black circle from the local to the remote pins
- 4 Plug the IR Extender into the remote jack on the front of the unit



SPECIFICATIONS

Input/Output Connector TypeS/PDIF and TOSlink
S/PDIF (Digital coax) performance96 kHz
Power Consumption 15 Watts (max.)
Power Supply 5VDC
Dimensions 4”D x 3.25”W x 1.25”H
Shipping Weight 2 Lbs

WARRANTY

Gefen Inc. warrants the equipment it manufactures to be free from defects in material and workmanship.

If equipment fails because of such defects and Gefen Inc. is notified within two (2) year from the date of shipment, Gefen Inc. will, at its option, repair or replace the equipment, provided that the equipment has not been subjected to mechanical, electrical, or other abuse or modifications.

Equipment that fails under conditions other than those covered will be repaired at the current price of parts and labor in effect at the time of repair. Such repairs are warranted for ninety (90) days from the day of reshipment to the Buyer.

This warranty is in lieu of all other warranties expressed or implied, including without limitation, any implied warranty or merchantability or fitness for any particular purpose, all of which are expressly disclaimed.

1. Proof of sale may be required in order to claim warranty.
2. Customers outside the US are responsible for shipping charges to and from Gefen.
3. Copper cables are limited to a 30 day warranty and cable must be free from any scratches, markings, and neatly coiled.

The information in this manual has been carefully checked and is believed to be accurate. However, Gefen Inc. assumes no responsibility for any inaccuracies that may be contained in this manual. In no event will Gefen Inc., be liable for direct, indirect, special, incidental, or consequential damages resulting from any defect or omission in this manual, even if advised of the possibility of such damages. The technical information contained herein regarding 2x1 Digital Audio Switcher features and specifications is subject to change without notice.